



Remote Control User's Guide



Table of Contents

SETUP AND REFERENCE

Quick setup

Insert the Batteries	S-1
Making the Remote Work with Your Receiver	S-1
Program the Remote to Control Your TV	S-2
Placing Your Remote in Limited Mode.....	S-3

Operation

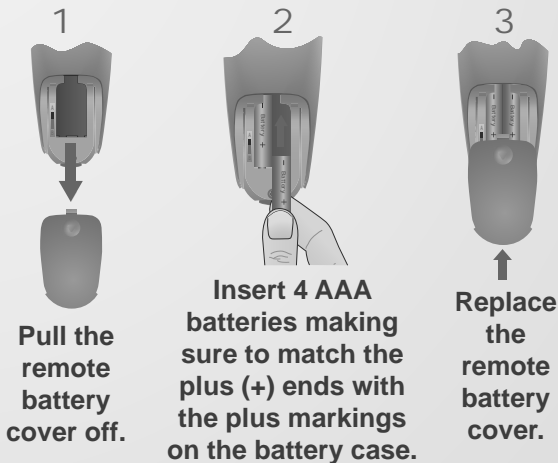
If You Lose Your Picture.....	S-3
SAT Mode.....	S-4
TV Mode.....	S-5
VCR Mode.....	S-6

IN THIS GUIDE

Remote Control Overview	1
Using the Guide	1
Remote Control Modes	1
How the Remote Communicates	2
Programming for Other Equipment	2
Combination Equipment (for example, TV/VCR)	2
Limited Mode	2
Programming Using Equipment Code Tables	3
Scanning for Equipment Codes	4
Switching Between TV and Amplifier Volume Control.....	6
Programming the Remote to Control a Second Receiver in AUX Mode	7
Reading Out the Remote Control Codes	8
Discrete Codes for Learning Remotes	9
Equipment Codes	10
Troubleshooting.....	18
Limited Warranty.....	19
Your Remote Control Codes.....	Inside Back Cover

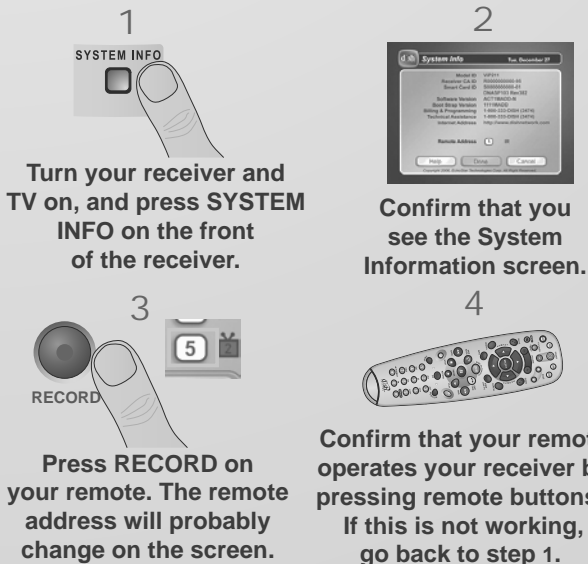
1

Insert the Batteries



2

Making the Remote Work With Your Receiver



Program the Remote to Control Your TV

1



Turn your TV on.

2



Press & hold the TV Mode button until all Mode buttons light up.

3

POWER



Press POWER.

4



Press the UP ARROW repeatedly (about 1 press per second) until your TV turns off.

5



Press POUND.

6



Press the POWER button to turn the TV on and try other buttons to make sure the code works. If you want to try another code, start over from step 1.

Placing Your Remote in Limited Mode

Limited Mode locks out all the TV mode operations except for TV power, Mute, and Volume. This prevents you from accidentally tuning away from satellite programming.

1



Press & hold the TV Mode button until all Mode buttons light up.

2



Press the PAGE UP button.

3



Press POUND.

To take the remote out of Limited Mode, use the PAGE DOWN button instead of the PAGE UP button in step 2.

If You Lose Your Picture (How to Use the Recover Button)

Use the Recover button to get back to watching satellite programming if you accidentally change channels or inputs on your TV.

1



Press and hold RECOVER until all mode buttons light up.

2



If you see the System Information screen, proceed to step 4. Otherwise, continue to step 3.

(Your screen may be different)

3



Press RECOVER again & wait until the mode lights stop flashing. If you see the System Information screen, go to step 4. If not, repeat this step until you do.

4



Press SELECT to resume watching TV.

Remote Operation

SAT Mode

To use the features described in this section, make sure you are in SAT mode by pressing the SAT Mode button.

SAT

Note: Some features may not be available depending on your receiver model.

Volume & Mute Buttons

Control TV volume

Programming required (see S-2)

Receiver Power & TV Power

Top button turns the receiver on/off, bottom button turns the TV on/off
Programming required (see S-2)

Press this button for SAT Mode

Page Buttons

Page up/down in menus

Program Guide

Display current and future satellite program listings

Arrows/Select Buttons

Channel up/down, navigate through menus/guides and select a desired option

Browse

See what is on other channels while watching TV

View Satellite Programming

Exit out of any menu/guide and go back to viewing live TV

DISH

Explore interactive TV features

Number Buttons

Enter a channel number, or select menu items

Search

Search for a program

Receiver Menu

Access receiver features and settings

Themes

Search for programs using Themes

Recall

Go back to last channel viewed

Info

Display program info

Recover

Recovers satellite programming if your TV input or channel has changed


Format

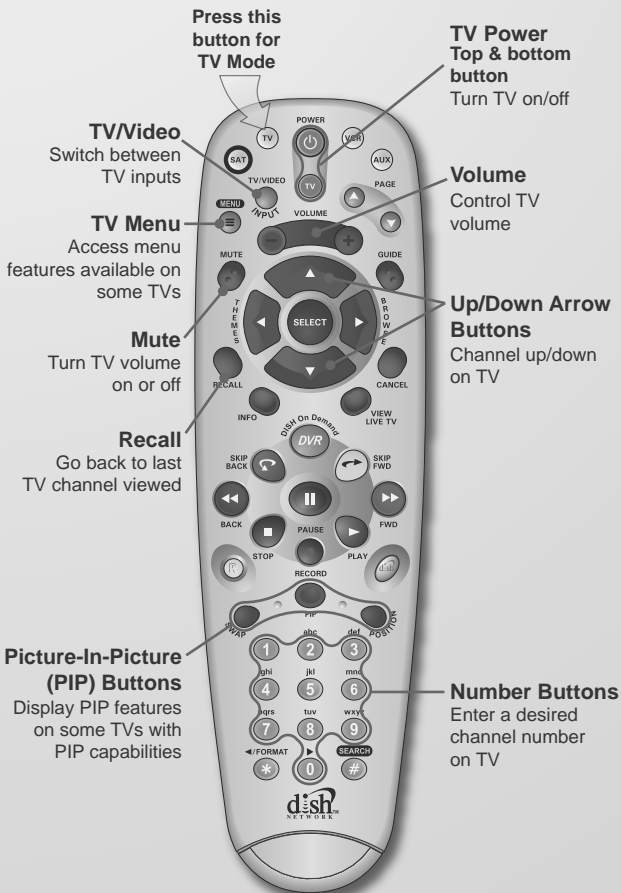
Format the picture to the desired width to match the program you are viewing



Remote Operation

TV Mode

To use the features described in this section, make sure you are in TV mode by pressing the TV Mode button.  Remote programming is required. See S-2 for instructions.



Note: Remote operation is different on DISH Network TVs. See your DISH Network TV User's Guide for proper operation.

Remote Operation

VCR Mode

To use the features described in this section, make sure you are in VCR mode by pressing the VCR Mode button. You can use this mode to operate your DVD player instead of a VCR. Remote programming is required. See page 2 for instructions.



Press this button for VCR Mode

VCR/DVD Power & TV Power

Top button turns VCR/DVD player on/off, bottom button turns the TV on/off

TV/Video

Switch VCR between its TV & VCR mode

Up/Down Arrow Buttons

Channel up/down on VCR

Back

Rewind a videotape or reverse a DVD

Pause

Pause a videotape or DVD

Stop

Stop playing or recording a videotape, stop playing a DVD

FWD

Forward a videotape or DVD

Record

Record on a videotape

Play

Play a videotape or DVD

Number Buttons

Enter a desired channel number on VCR



REMOTE CONTROL OVERVIEW

Use this full-function remote to control your High Definition DISH Network receiver. Also, you can program the remote to control most of the popular brands of audio/video equipment like a TV, VCR, DVD player, or a second DISH Network satellite receiver. See *Programming for Other Equipment* on page 2.

Note: This remote control may have features not used by your receiver.

USING THE GUIDE

This guide makes it easy to set up and use your remote control. By now you've noticed that the cover contains information on quick set up and remote operation.

The rest of the guide contains in-depth information to help you get the most from your remote control, including controlling other equipment like TVs, VCRs, and DVD players.

REMOTE CONTROL MODES

Use the remote control's mode buttons to set the remote to the correct mode for the equipment. Be sure to program the remote to control other equipment as described on page 2.



To change the mode, press the button for the equipment you want to control. The mode button lights for two seconds to show you've set the remote to that mode.

If you program the remote to control other equipment, refer to the following for remote control operation instructions:

- TVs, page S-5.
- VCRs and DVD players, page S-6.
- DISH Network satellite receivers, page S-4.
- Stereo equipment use only these buttons: **SELECT** (change inputs), **MUTE**, **VOLUME**, and **POWER**.

HOW THE REMOTE COMMUNICATES

This remote uses IR signals to control the receiver and other equipment.

IR signals travel only short distances (up to 40 feet), and cannot go through walls or other solid objects. Point the remote control right at the equipment you want to control, with no objects to block the signal path.

PROGRAMMING FOR OTHER EQUIPMENT

Page S-2 shows you how to program the remote to control a TV. This section uses a different method to program the remote to control a TV or other equipment (such as a VCR, DVD player, tuner, amplifier, or a second TV). You can program the remote by either following the instructions in *Programming Using Equipment Code Tables* on page 3, or the *Scanning for Equipment Codes* procedure described on page 4.

COMBINATION EQUIPMENT (FOR EXAMPLE, TV/VCR)

When programming the remote to control combination equipment, such as a TV/VCR or a TV/DVD, program the remote control in one mode, and then repeat the procedure in the other mode. For example, to program the remote to control a TV/VCR using code 748, follow the instructions to program the remote to control the TV using code 748, and then repeat the instructions for the VCR using the same code. Put the remote in TV mode to use the TV, and VCR mode to use the VCR.

LIMITED MODE

You can program your remote control in Limited Mode to keep from accidentally changing the channel on your TV or VCR. When you use the remote to control your TV in Limited Mode, you will only be able to use the **POWER**, **MUTE**, and **VOLUME** buttons to control your TV. Also, when you use the remote to control your VCR in Limited Mode,

you will only be able to use the POWER and VCR function buttons. The section *Programming Using the Equipment Code Tables* has a step that tells the remote control to go into Limited Mode. Also, a quick way to put the remote in Limited Mode is on page S-3.

Note: Limited Mode cannot be used with audio amplifiers.

PROGRAMMING USING EQUIPMENT CODE TABLES

You can set up the remote to control other equipment using the equipment codes listed on page 10 and the modes as shown on page 1.

Instructions	Additional Information
1 Turn the equipment on.	Use the equipment's front panel buttons or its remote control.
2 Find the brand name of the equipment in the tables starting on page 10.	If the brand isn't listed, see <i>Scanning for Equipment Codes</i> on page 4.
3 Press and hold the mode button until all the other mode buttons light up, and then let go of the button. The mode button flashes.	For example, hold the TV mode button for a TV until all of the other mode buttons light. When you let go, TV will flash.
4 <i>For AUX mode only.</i> Press 0 for a second TV, or 1 for a second VCR, or 2 for a tuner, or amplifier.	This step is for programming the kind of equipment that should be programmed in AUX mode. If you're not programming in AUX mode, skip to step 5.
5 Enter one of the three-digit equipment codes from the table using the number buttons.	The three-digit equipment code should be for the brand name of your equipment that you found in step 2.
6 If you want to program Limited Mode, press 1. If not, skip to step 7.	See <i>Limited Mode</i> on page 2 for more information.

Instructions	Additional Information
7 Press POUND (#).	If you entered the code correctly, the mode button flashes three times.
8 Press POWER to turn off the equipment. If the equipment does not turn off, go to step 10.	If the code works, the equipment should turn off.
9 Turn the equipment back on and try some other buttons to make sure they work. If the code works for other buttons, stop here.	For example, sometimes POWER works when other buttons don't.
10 If the code doesn't work, redo steps 3 through 9 with another equipment code from the tables.	Try every code listed for your brand until one works for your equipment.
11 If you can't find a code that works, try <i>Scanning for Equipment Codes</i> that follows.	

SCANNING FOR EQUIPMENT CODES

Instructions	Additional Information
1 Turn the equipment on.	Use the equipment's front panel buttons or its remote control.
2 Press and hold the mode button until all the other mode buttons light up, and then let go of the button. The mode button flashes.	For example, hold TV for a TV until all of the other mode buttons light. When you let go, TV will flash.

Instructions

Additional Information

- 3** *For AUX mode only.* Press 0 for a second TV, or 1 for a second VCR, or 2 for a tuner, or amplifier. Then press the **STAR (*)** button.
- 4** Press **POWER**.
- 5** Press the **UP** or **DOWN ARROW** repeatedly until the equipment turns off.
- 6** Press **POUND (#)**.
- 7** Turn the equipment back on and try some other buttons to make sure they work.
- 8** If necessary, repeat this procedure until you've tried all the codes.
- This step is for programming which kind of equipment that should be programmed in AUX mode. If you're not programming in AUX mode, skip to step 4.
- This puts your remote in the scan mode.
- As you press the **UP** or **DOWN ARROW**, the remote tries each code in the memory to see if it can turn off your equipment. When the equipment turns off, you have found a code that might work.
- Note:** The mode button for the equipment will flash rapidly eight times when you've scanned all the codes for that equipment.
- The mode button flashes three times if you have entered the code correctly. This stores the code you found.
- Press **POWER** to turn the equipment back on. Try some other buttons to make sure they work. Sometimes **POWER** works when other buttons don't.
- You may need to repeat the scan to find the best code for your equipment.

SWITCHING BETWEEN TV AND AMPLIFIER VOLUME CONTROL

When you set up the remote to control a TV, the **MUTE** and **VOLUME** buttons control the TV volume, even if your remote control is in **SAT** mode. However, if you want to use the **AUX** mode to control a tuner or amplifier that has a volume setting, you can set up the remote to control the equipment's volume instead of the TV volume while your remote control is in **SAT** mode. Follow the instructions in the left column. To change back to controlling the TV volume in **SAT** mode, follow the instructions in the right column.

Control Amplifier Volume

Control TV Volume

- 1** Press and hold the **AUX** mode button for three seconds, and then let go of it. The **AUX** mode button will blink.
- 2** Press the **POUND (#)** button.
- 3** Press the plus (+) side of the **VOLUME** button.
- 4** Press the **0** number button.
- 5** Press the **POUND (#)** button.

The **AUX** mode button flashes three times.

MAKE SURE THE REMOTE CONTROLS THE AMPLIFIER'S VOLUME:

- 6** Press the **SAT** mode button.
- 7** Press the plus (+) and minus (-) sides of the **VOLUME** button.
- 8** The equipment's volume changes and the **AUX** mode button lights instead of the **TV** mode button.

- 1** Press and hold the **TV** mode button for three seconds, and then let go of it. The **TV** mode button will blink.
- 2** Press the **POUND (#)** button.
- 3** Press the plus (+) side of the **VOLUME** button.
- 4** Press the **0** number button.
- 5** Press the **POUND (#)** button.

The **TV** mode button flashes three times.

MAKE SURE THE REMOTE CONTROLS THE TV'S VOLUME:

- 6** Press the **SAT** mode button.
- 7** Press the plus (+) and minus (-) sides of the **VOLUME** button.
- 8** The **TV's** volume changes and the **TV** mode button lights instead of the **AUX** mode button

PROGRAMMING THE REMOTE TO CONTROL A SECOND RECEIVER IN AUX MODE

If you have another DISH Network satellite receiver installed, you can use this remote in **AUX** mode to control it along with your new receiver. When you program the remote to control the other receiver, the remote will send out IR signals to the receiver. You can program the remote to control any other DISH Network satellite receiver, except for following:

- TV2 on DISH 322, DISH Player-DVR models 522, 625, 942 and ViP222 & ViP622 DVR
- DishPlayer 7100/7200

1 Turn on the other receiver and display the **System Info** screen (see the receiver user's guide for information on how to display the screen).

Write down the address shown: _____

2 Press and hold the **AUX** button until all the other mode buttons light up, and then let go of the button. The **AUX** button flashes.

3 Press the **3** button.

4 Use the **NUMBER PAD** to enter the address you wrote in step 1.

5 Press **POUND (#)**. The **AUX** button blinks three times.

6 Press **RECORD** to make sure the address and the remote matches the address on the receiver.

READING OUT THE REMOTE CONTROL CODES

These instructions explain how to check the remote control code you put in the remote control when you set it up. Be sure to write them in the spaces provided on the inside of the back cover.

Instructions	Additional Information
<p>1 Press and hold the mode button for the equipment you want the remote to control. When all the other mode buttons light up, let go of the mode button - that mode button should now be flashing.</p>	<p>For example, hold the TV mode button for a TV until all of the other mode buttons light. When you let go, the TV mode light will flash.</p>
<p>2 Press the POUND (#) button <i>twice</i>. The mode button flashes the number for each digit of the equipment code, with a pause between the groups of flashes. A quick flash is for zero.</p>	<p>For example, if the code is 570, the mode button flashes five times, pauses, flashes seven times, pauses, and flashes once quickly.</p>
<p>For AUX mode, the first group of flashes tells you what the AUX mode controls. A quick flash (zero) before the three-digit code is for a TV; one regular flash is for a VCR or DVD player; and two flashes is for a tuner or amplifier.</p>	<p>For example, if the TV code is 570, the AUX mode button flashes once quickly, pauses, flashes five times, pauses, flashes seven times, pauses, and flashes once quickly.</p>

DISCRETE CODES FOR LEARNING REMOTES

Remote control discrete On and Off IR commands are used by installers when programming macro commands into universal remotes. Using an On-only or Off-only command is more effective than a toggle On/Off command when trying to ensure the satellite receiver is reliably in one state or the other. To use discrete power commands, complete the following:

- 1 Program the DISH Network remote to desired remote address (see *Changing the Remote and Receiver Address* below).
- 2 Hold the SAT mode button until all mode buttons light, then release.
- 3 Press POWER (not TV POWER).
- 4 Press VOLUME UP for discrete power on, or VOLUME DOWN for discrete power off.
- 5 Press any other button when done to end this procedure.

CHANGING THE REMOTE AND RECEIVER ADDRESS

One quick way to avoid remote conflicts is by changing the address on your remote and receiver. If you notice that your receiver is changing channels or opening menus but you're not using the remote control, a quick change of address should fix the problem.

- 1 Press SYSTEM INFO on the receiver's front panel. The **System Information** screen displays and shows the **Remote Address**.
Write down the address shown: _____
- 2 Press and hold SAT on your remote control for about three seconds, until all of the mode buttons light up, and then let go of SAT.
- 3 Use the NUMBER PAD to enter any number between 1 and 16, but not the one you wrote in step 1.
- 4 Press the POUND (#) on your remote (the SAT button will flash three times). Write down the number you entered in the space provided on the inside back cover.
- 5 Press RECORD. Make sure the **Remote Address** you see on the **System Information** screen is the same as the one you entered in step 3. If it isn't, the remote cannot control the receiver. Press RECORD a second time.
- 6 Press SELECT to close the **System Information** screen.

EQUIPMENT CODES

These tables contain the manufacturer codes for programming the remote to control your TV, a VCR, DVD player, or audio amplifier. Every attempt has been made to include all codes. If your equipment brand is not listed or if the codes do not work, the remote may not control your equipment. In some cases codes may operate some but not all buttons shown in this guide.

TV CODES

Programming in AUX mode: In most cases use these codes to program in TV mode; however, if programming in AUX mode, press 0 before entering the TV code.

Abex 230	Dimensia 645 650
Action 662	Dixi 566 620
Admiral 521 605 675	Dumont 501 627 652
Aiko 727	Echostar 722
Akai 570 573	Electrohome 526 573 651 652 654 656 709 728
Alleron 682	Emerson 526 534 536 541 573 590 627 636 642 648 652 654 655 657 658 662 682 683 692 696 699 720 816
A-Mark 620	Envision 506 573 652 654
Amtron 657	Fisher 542 590 683
Anam National 509 541 620 651 657 698	Fortress 573
AOE 505 506 519 520 573 620 627 652 653 654	Fujitsu 534 682 694
Apex 743 744 745 757 814 815	Funai 534 541 657 662 682 694
Archer 620	Futuretech 541 657 694
Audiovox 620 657 662	GE 508 509 543 544 630 645 646 650 651 652 654 676 690 691 698 701 715 716 725 728 742 779 809 859
Baycraft 536	General Electric 627
Belcor 652	Gibraltar 501 652
Bell & Howell 590 675 683	Goldstar 505 523 526 545 546 566 573 652 653 654 655 656 658 693 730
Bradford 657	Granada 627
Brockwood 627 652	Grand 627
Broksonic 562 748 752	Grunpy 657 682
Candle 506 523 525 536 627 652 654	Hallmark 627 652 654
Candle/Citizen 573	Harmon/Kardon 561
Capehart 519 627	Harvard 657
Circuit City 627	Hinari 534
Citizen 506 516 523 524 525 526 590 652 654 657 658 680 727	Hisense 759
Colortyme 573 627 652 654	Hitachi 523 526 548 549 553 554 555 585 597 626 636 638 643 648 652 654 655 702 718 726 786 788 789 790 791 792 801 802
Concerto 523 652 654	IMA 657
Contec Cony 662	Infinity 566
Contec/Cony 541 655 657 726	JBL 566
Craig 536 541 657 662 694	JC Penney 505 506 516 525 526 543 546 631 645 646 650 652 653 654 658 676 680 690 691 701 725 726 728 730
Crown 526 536 657	
Curtis Mathes 506 516 526 573 590 641 645 650 652 654 658 680 683 703 708	
CXC 541 657 662	
Cytron 903 904	
Daewoo 505 524 526 529 530 531 573 630 652 653 654 658 684 698 719 727 816	
Daytron 526 627 652 654 658	
Dell 772 773 774	

TV CODES (CONTINUED)

Jensen 556 573 652 654	761 765 780 784 811 819 820 821
JVC 508 557 559 642 649 655 676 726 735 736 737 812 817	822 823 867 868 869 870 871 872 873 874 875 876 877 878 879 880 881 882 883 884 885 886 889 890 900
Kawasho 548 561 573 652 654	Philco 505 506 525 536 568 573 610 651 652 653 654 655 656 723 724 729
Kenwood 506 573 652 654 656	Philips 525 566 651 652 655 656 690 723 724 729 770 782 824 825 826 827 828 891 892 893 894
Kloss 561 610	Philips Magnavox 782 826 827 828 829
Kloss Novabeam 657 698 723 724	Pilot 652 658
KTV 526 541 573 657 658 662 696	Pioneer 502 548 576 636 637 648 652 654 708
LG 653 766	Portland 505 526 573 652 653 654 658 727
Lloyds 627	Price Club 680
Lloytron 526	Prism 676
Loewe 566	Proscan 645 646 650 691 725 742 857
Logik 675	Proton 513 519 526 536 585 627 652 654 655
Luxman 523 652 654	Pro View 902
LXI 563 566 590 595 617 631 635 645 646 650 654 683 691 701 725	Pulsar 501 652
M. Wards 500 505 506 534 543 567 568	Quasar 508 509 651 676 698 700 860 861 862 895 896
Magnasonic 573	Radio Shack 526 541 590 607 612 645 662 683 698
Magnavox 506 520 525 536 566 567 568 573 610 652 654 656 723 724 729 762 818 887 888	Radio Shack/Realistic 590 607 650 652 654 655 657 658 683 730
Majestic 675	RCA 503 505 548 630 633 634 636 641 645 646 648 650 651 652 653 654 656 691 698 701 708 715 716 725 742 749 763 776 805 830 831 832 863 864
Marantz 506 566 573 652 654	Realistic 590 645 683
Megatron 627 654	Runco 501
Memorex 590 627 653 654 675 683 720	Sampo 506 519 652 654 658 698 730 746
MGA 504 505 506 542 571 573 627 652 653 654 656 728	Samsung 505 506 516 523 526 566 573 612 627 647 652 653 654 655 656 658 680 704 717 730 738 755 833 858 897
Midland 501 646 658 676 725 730	Samwon 620
Mitsubishi 504 505 542 570 571 572 573 597 623 627 652 653 654 656 705 728 787 799 804	Sansui 754 834
Mitsui 769	Sanyo 542 590 652 683
Montgomery Ward 675	SBR 566
Motorola 521 605 651	Schneider 566
MTC 505 506 516 523 573 627 652 653 654 680	Scotch 654
Multitech 657	Scott 526 534 541 600 652 654 655 657 662 682 696 701
NAD 502 617 627 631 635 637 654	Sears 523 534 542 563 590 595 601 604 617 627 631 635 645 646 650 652 654 656 682 683 688 691 703 725 726
National 509	
NEC 505 506 507 517 523 573 627 651 652 653 654 731 732	
Nikkai 612	
Nikko 654 727	
Normadic 717	
Novabeam 561	
NTC 727	
Nyon 701	
Olevia 766 773	
Onwa 541 657	
Optimus 637	
Optonica 521 605 607	
Orion 694	
Osaki 612	
Panasonic 508 509 512 566 644 651 662 676 685 689 698 700 716 734	

TV CODES (CONTINUED)

- Seimitsu** 627
Sharp 521 526 585 605 607 628 629
652 654 655 658 739 740 741 777
794 803 835 836 898
Shogun 652
Signature 675
Silver 573
Simpson 525
Solavox 612
Sony 500 578 640 690 758 781 783
795 796 797 798 806 807 808 810
837 838 839 840 841 842 843 844
845
Soundesign 525 536 541 627 652
654 657 682
Spectricon 520 620
Squareview 694
SSS 505 541 573 652 657
Starlite 657
Supra 523
SVA 901 905
Sylvania 506 525 536 566 568 569
573 600 610 652 654 656 723 724
729 733 756 764
Symphonic 632 657 662 692 694
846
Tandy 521 605
Tatung 509 651 698
Technics 508 676
Techwood 523 573 652 654 676
- Teknika** 504 505 512 516 523 524
525 526 534 536 541 573 644 652
653 654 655 657 658 662 675 680
682 685 726 727
Tera 513
Thomas 627
Thompson 709
TMK 523 573 627 652 654
Toshiba 516 590 617 631 635 680
683 688 750 771 785 793 847 848
849 850 851 852 853 854 855 856
865 866
Totevision 526 658
Toyomenko 627
Universal 543 690
Vector Research 506
Victor 557
Video Concepts 570
Vidtech 505 573 627 652 653 654
Viewsonic 760
Wards 536 573 607 645 650 652 653
654 656 675 682 690 715 723 724
729
White Westinghouse 816
Yamaha 505 506 573 652 653 654
656
York 627
Zenith 501 520 639 652 675 693 775
778 813 899
Zonda 620

VCR CODES

Programming in AUX mode: In most cases use these codes to program in VCR mode; if programming in AUX mode, press 1 before entering the VCR code.

- Adventura** 588
Aiwa 588 622 623
Akai 513 515 516 517 518 568 682
American High 678
Amstrad 588
ASA 556
Asha 675
Audio Dynamics 592 600
Audiovox 676
Beaumarck 675
Bell & Howell 581
Broksonic 559
Calix 676
Candle 534 594 675 676
Canon 554 678 679
Citizen 534 591 592 594 675 676
Colortyme 592
Craig 591 675 676
- Curtis Mathes** 554 592 594 605 607
675 678 679
Cybernex 675
Daewoo 534 547 559 588
DBX 592 600
Dimensia 607
Dumont 549
Dynatech 588
Electrohome 512 676
Electroponic 676
Emerson 505 508 509 511 512 518
534 559 568 588 590 618 676 678
Finlandia 549
Finlux 549 556 588
Fisher 549 581 584 588 610
Fuji 678
Funai 588
Garrard 588

VCR CODES (CONTINUED)

- GE** 551 552 554 572 591 605 607 675
678 679
- Go Video** 557 558 620
- Goldstar** 592 594 676
- Goodmans** 585
- Gradiente** 588
- Granada** 549 581
- Grundig** 556
- Harley Davidson** 588
- Harman Kardon** 592
- Harmon/Kardon** 568 592
- Headquarter** 581
- Hitachi** 536 538 539 540 588 595 597
682
- Instant Replay** 678
- ITT** 518
- JC Penney** 554 581 591 592 594 595
600 675 676 678 679
- JCL** 678
- Jensen** 595 682
- JVC** 561 562 563 581 592 594 600
682
- Kenwood** 562 581 592 594 600 682
- Kodak** 676 678
- LG** 676
- Luxor** 518
- Lloyd's** 588
- LXI** 676
- M. Wards** 512 554 585 590 591
- Maganvox** 797
- Magnavox** 527 533 554 556 678 679
797 798
- Magnin** 676
- Marantz** 554 556 581 585 592 594
600 678
- Marta** 676
- Matsushita** 678
- MEI** 554 678
- Memorex** 533 549 554 566 581 585
588 675 676 678
- MGA** 512 567 568
- MGN Technology** 675
- Midland** 579
- Minolta** 595
- Mitsubishi** 512 562 567 568 570 571
595
- Motorola** 678
- MTC** 544 588 675
- Multitech** 579 588 675
- Mutitech** 591
- NEC** 562 581 592 594 600 682
- Nikko** 676
- Noblex** 675
- Olympus** 678
- Optimus** 676
- Optonica** 585
- Panasonic** 523 554 598 614 628 633
678 679 777 780 781 782 783 784
785 786 787 788 789 790 791 792
793 794 795 796 799 808 809 810
- Pentax** 592 595
- Pentex Research** 594
- Perdio** 588
- Philco** 554 678 679
- Philips** 554 556 585 678 801 802 803
804
- Pilot** 676
- Pioneer** 562 574 575 576 600
- Proscan** 605 607
- Pulsar** 533
- Quarter** 581
- Quartz** 581
- Quasar** 554 678 679 770 771 772 805
806
- Radio Shack** 512 607 610 676
- Radio Shack/Realistic** 581 584 588
675 676 678 679
- Radix** 676
- Randex** 676
- RCA** 518 525 527 528 591 595 605
607 615 631 649 675 678 773 774
775
- Realistic** 534 549 554 581 584 585
588 675 676 678 679
- Ricoh** 502
- Runco** 533
- Salora** 567 581
- Samsung** 515 517 534 579 591 675
755 807
- Sanky** 533
- Sansui** 544 562 600 682
- Sanyo** 549 581 583 675
- SBR** 556
- Scott** 508 534 559 590
- Sears** 549 581 584 595 610 676 678
- Sharp** 512 585 595 607 625
- Shintom** 595
- Shogun** 675
- Singer** 678
- Sony** 500 501 502 504 768 778
- STS** 678
- Sylvania** 554 556 567 588 678 679
756
- Symphonic** 588 594
- Tandy** 581 588
- Tashiko** 676
- Tatung** 594 682
- Teac** 588 594 682
- Technics** 554 633 678
- Teknika** 554 588 676 678
- TMK** 675
- Toshiba** 534 535 567 584 590 769
776

VCR CODES (CONTINUED)

Totevision 591 675 676
Unitech 675
Vector Research 534 592 600
Victor 561 562 600
Video Concepts 534 568 592 600

Videosonic 591 675
Wards 534 588 595 675 676 678
XR-1000 588 678
Yamaha 581 592 594 600 682
Zenith 500 501 533 779

DVD PLAYER CODES

Programming in AUX mode: In most cases use these codes to program in VCR mode; if programming in AUX mode, press 1 before entering the DVD Player code.

Aiwa 634 694
Alpine 653
Apex 654 655 744 757 835 839
Archos 885
BOSE 758 811
Broksonic 656 752
Clarion 696
Classic 695
CyberHome 833
Cytron 904
Daewoo 657 859
Denon 697 699 700
EchoStar 722
Emerson 658
Fisher 659
Funai 658
GE 702 703
Go Video 692 693 822
GPX 704
Hitachi 660 705 706 707 740 823 860
668
JVC 689 711 850 861 862 863
Konka 637 638 753
Koss 745
Magnavox 661
Memorex 709
Mintek 710
Mitsubishi 767 867

Norcent 711
Oritron 723
Panasonic 639 663 699 714 715 716
734 765 813 840 841 855 856 868
869 870 871 872 873 882
Philips 766 874
Pioneer 665 719 812 876 877 878
879 880
Proscan 720
Qwestar 723
RCA 666 690 749 816 842 854
Sampo 724
Samsung 652 667 668 691 740 741
820 821 844 845 866 875 881 705
Sansui 725 754
Sanyo 643
Sharp 669 727 865
Sony 617 645 670 671 729 730 731
768 817 818 830 831 832 836 837
838 843 847 848 849 851 852 853
857 858 864 883 884
Sylvania 658 764 829
Teac 732
Technics 733
Techwood 664
Toshiba 616 646 672 735 736 814
815 819 825 826 827 828 834 846
Yamaha 737 739
Zenith 673 824

TUNER/AMPLIFIER CODES

Programming in AUX mode: Press 2 before entering the tuner/amplifier code.

Aiwa 636 641 656 687 718 720 724
725 726
BOSE 761 780
Carver 653
Citizen 709
Denon 647 674 759 760 762 807 809
814 835

Fisher 653
GE 711
Goldstar 677 690
Harman Kardon 640 751
Harmon/Kardon 672
Hitachi 717
JBL 640

TUNER/AMPLIFIER CODES (CONTINUED)

JVC 637 683 703 725 786 827
Kenwood 676 691 726 728 774 795
828 829 830 831 832 840 842
Magnavox 654 705
Marantz 651 764
Nakamichi 671
NEC 716
Onkyo 642 660 662 678 785 788 790
791 792 796 801
Optimus 648 664
Panasonic 643 644 652 783 797 798
799 808 810 815 816 817 818 819
820 821 822 824 825 826 833 836
837 838 839
Pioneer 658 667 668 679 702 767
770 772 779 802 806 844
Proton 654 705

Quasar 652
RCA 635 638 704 727
Sharp 712 713 714 715
Sherwood 646 670
Sony 639 645 687 728 729 730 765
766 769 771 773 775 776 777 778
781 782 784 787 789 793 794 803
811 812 813
Soundmatters 763
Teac 684
Technic 652
Technics 643 644 652 768 804 805
843
Toshiba 710
Victor 703
Yamaha 663 730 731 732 733 823
834 841

TV/VCR COMBO CODES

Programming for combination equipment: Program the remote control in TV mode using the TV code and then in VCR mode using the VCR code.

	TV Code	VCR Code
Magnavox	887	797
	888	798
Philips	891	801
	892	802
	893	803
	894	804
Quasar	860	770
	861	771
	862	772
	895	805
	896	806
RCA	863	773
	864	774
Samsung	755	755
	897	807
Sylvania	756	756

TV/DVD COMBO CODES

Programming for combination equipment: Program the remote control in TV mode using the TV code and then in VCR mode (or AUX - press 1 before entering the DVD code) using the DVD code.

	TV Code	DVD Code
Apex	757	757
Broksonic	752	752
Cytron	904	904
Panasonic	734	734
	765	765
RCA	749	749
Sansui	754	754
Sylvania	764	764
Toshiba	865	814
	866	815

TV/DVD/VCR COMBO CODES

Programming for combination equipment: Program the remote control in TV mode using the TV code, then in VCR mode using the VCR code, and then DVD in AUX mode (press 1 before entering the DVD code) using the DVD code.

	TV Code	DVD Code	VCR Code
Panasonic	900	882	810

TV/VCR/TUNER COMBO CODES

Programming for combination equipment: Program the remote control in TV mode using the TV code, then in VCR mode using the VCR code, and then tuner in AUX mode (press 2 before entering the tuner code) using the tuner code.

	TV Code	VCR Code	Tuner Code
Panasonic	867	796	797
	868	799	798
	869	808	799
	870	780	839
	871	781	838
	872	782	837

Table continues on next page

TV/VCR/TUNER COMBO CODES (CONTINUED)

	TV Code	VCR Code	Tuner Code
Panasonic	873	783	836
	874	784	833
	875	785	826
	876	786	825
	877	787	824
	878	788	822
	879	789	821
	880	790	820
	881	791	819
	882	792	818
	883	793	817
	884	794	816
	885	795	815
	889	809	808

TROUBLESHOOTING

What's Happening	What's Wrong	What You Can Do
While doing remote control procedure, the remote control stops working.	<ul style="list-style-type: none"> If you don't press a button for 20 seconds in a programming sequence, the remote shuts off its programming function. 	Start over again.
When you press a button on the remote control, the equipment doesn't do what you expect.	<ul style="list-style-type: none"> Maybe you didn't set the remote to the mode for the equipment you want to control. Maybe you're not pointing the remote control right at the TV (or other equipment). Maybe the remote control is missing batteries, maybe you put the batteries in the remote the wrong way, or maybe the batteries are weak or dead. Maybe you didn't set up the remote to control the equipment. 	<ul style="list-style-type: none"> Press the correct mode button to set the remote to the mode for the equipment you want to control. The remote control uses IR signals to control all equipment except for the receiver (when using UHF). IR signals travel <i>only</i> 40 feet or less, and <i>can't</i> go through walls or other solid objects. You <i>must</i> point the remote control right at the equipment, with <i>no</i> objects to block the signal path. If the batteries are missing or dead, put fresh AAA-size batteries in. If the remote has fresh batteries, check whether you put them in the right way. If you didn't, take them out and put them in the right way. Make sure you set up the remote to control all the equipment you want to use. See <i>Program the Remote to Control Your TV</i> on page S-2 and <i>Programming for Other Equipment</i> on page 2.
Your picture is snowy (or blue or black).	<ul style="list-style-type: none"> You have accidentally changed the channel on your TV. 	<ul style="list-style-type: none"> Make sure your TV (and VCR, if connected) is tuned to the correct channel. Also try using the Recover button as described on page S-3.
Your remote control isn't working	<ul style="list-style-type: none"> The remote control is in the wrong mode. You might be using the wrong remote control (TV1 or TV2). Your batteries are worn out. 	<ul style="list-style-type: none"> Make sure the remote control is in the correct mode. For example, if you want to use the satellite receiver, put the remote control in SAT mode (see <i>Remote Control Modes</i> on page 1). Make sure you are using the correct remote control (TV1 or TV2) for your locations (multi-room receivers only). Change the batteries as described on page S-1.

What's Happening	What's Wrong	What You Can Do
When you press the remote control Mute or Volume button, nothing happens.	<ul style="list-style-type: none"> • Maybe you have not set up the remote control. • Maybe you're trying to control TV volume but you set up the remote to control a tuner or amplifier in AUX mode. 	<ul style="list-style-type: none"> • See <i>Programming the Remote to Control Your TV</i> on page S-2 and <i>Programming for Other Equipment</i> on page 2. • Set up the remote to control <i>either</i> TV volume <i>or</i> tuner/amplifier volume, whichever you want. See page 6.
Your PIP (Picture-In-Picture) button isn't working.	<ul style="list-style-type: none"> • Your receiver doesn't use PIP. 	<ul style="list-style-type: none"> • Upgrade to a receiver with this feature.

LIMITED WARRANTY



This *Limited Warranty* is a legal document. Keep it in a safe place. Remember to keep your *Sales Receipt* for warranty service. We will consider any items you return without a copy of the *Proof of Purchase* to be out of warranty.

This warranty extends *only* to the original user (“you,” “your”) of the DISH Network remote control and is *limited* to the purchase price of the remote control. EchoStar Technologies Corporation and its affiliated companies (“we,” “our,” “us”) warrant this remote control against defects in materials or workmanship as follows. For one year from the original date of purchase, if we find the remote control is defective subject to the limits of this warranty, we will replace the remote at no charge for parts or labor. We warrant any such work done against defects in materials or workmanship for the remaining part of the original warranty period. This warranty *does not cover* installation of the DISH Network System; consumer instruction; physical set up or adjustment of any consumer electronic equipment; remote control batteries; signal reception problems; loss of use of the equipment; unused programming charges due to equipment malfunction; cosmetic damage; damage due to lightning, electrical or telephone line surges, fire, flood, or other acts of Nature; accident; misuse; abuse; repair or alteration by other than our factory service; negligence; commercial or institutional use; improper or neglected maintenance; equipment sold AS IS or WITH ALL FAULTS; equipment removal or reinstallation; shipping damage if the equipment was not packed and shipped in the manner we prescribe; nor equipment purchased, serviced, or operated outside the contiguous United States of America. REPLACEMENT AS PROVIDED UNDER THIS WARRANTY IS YOUR EXCLUSIVE REMEDY. WE SHALL NOT BE HELD LIABLE FOR ANY INCIDENTAL OR CONSEQUENTIAL DAMAGES FOR BREACH OF ANY EXPRESSED OR IMPLIED WARRANTY ON THIS DEVICE, NOR FOR ANY INCIDENTAL OR CONSEQUENTIAL DAMAGE RESULTING FROM THE USE OF, OR INABILITY TO USE, THIS DEVICE. UNDER NO CIRCUMSTANCES SHALL OUR LIABILITY, IF ANY, EXCEED THE PURCHASE PRICE PAID FOR THIS DEVICE. EXCEPT TO THE EXTENT PROHIBITED BY APPLICABLE LAW, ANY IMPLIED WARRANTY OF MERCHANTABILITY OR FITNESS FOR A PARTICULAR PURPOSE ON THIS DEVICE IS LIMITED IN DURATION TO THE DURATION OF THIS WARRANTY. WE RESERVE THE RIGHT TO REFUSE TO HONOR THIS WARRANTY IF WE DETERMINE ANY OF THE ABOVE EXCEPTIONS TO HAVE CAUSED THIS DEVICE NOT TO HAVE PERFORMED PROPERLY. THIS WARRANTY SHALL BE

VOID IF ANY FACTORY-APPLIED IDENTIFICATION MARK, INCLUDING BUT NOT LIMITED TO SERIAL OR CONDITIONAL ACCESS NUMBERS, HAS BEEN ALTERED OR REMOVED. THIS WARRANTY SHALL ALSO BE VOID IF THE DEVICE HAS BEEN OPENED BY AN UNAUTHORIZED PERSON (with the exception of opening the battery cover).

This warranty gives you specific legal rights which may vary from state to state. Some states do not allow the exclusion or limitations of incidental or consequential damages, or allow limitations on the duration of an implied warranty, so those limitations may not apply to you.

DISH NETWORK'S EXCHANGE PROGRAMS

DISH Network offers two options if you need to replace your remote control; the Advanced Exchange Program and the Post Receipt Exchange Program.

Advance Exchange Program

The Advanced Exchange Program allows you to have a replacement remote shipped immediately to you. Depending upon where you live, the remote should arrive within 3 to 5 business days. You will not have to return your defective remote to DISH Network using this program.

A shipping charge will be applied for shipping the replacement remote. This is a one-time fee based on DISH Network's competitive bulk shipping rates (additional charges may apply outside the continental U.S.). This fee will be charged to your billing account or valid credit card.

Post Receipt Exchange Program

The Post Receipt Exchange Program does require that you send DISH Network the defective remote control at your cost to determine if the equipment is covered under warranty. To provide faster service, upon receipt of your equipment you will be shipped a replacement. Your original equipment will not be available for return.

If your equipment is not covered under warranty and can be repaired, your billing account or credit card will be charged the standard repair fee for the replacement. If damage to the defective equipment is found, which DISH Network in its sole discretion determines has voided the warranty, or makes the equipment unrepairable, your billing account or credit card will be charged the market price of the replacement.

ACCESSORY WARRANTY

An accessory is any DISH Network branded equipment, displaying the DISH Network logo, excluding the receiver, Smart Card, cables and hookups, and non-mechanical components. A one-year warranty becomes effective upon the activation of the DISH system or date of purchase, if bought separately. A proof of purchase is required to verify the purchase date. If an accessory has an expired warranty, no exchange will be issued. You may purchase replacement accessories from DISH Network or your local retailer.

IF YOU NEED HELP

1. Review this *User Guide*.
2. See *Troubleshooting* on page 18.
3. Call the Customer Service Center at 1-800-333-DISH (3474). Have the date of purchase and your customer account number ready.
 - a. If the representative finds you should return the remote control, you'll get a telephone number to call for a Return Authorization (RA) number. *Before shipping* any equipment to us, you *must* get a Return Authorization number.
 - b. You *must* package returned equipment the right way. Follow the instructions the representative gives you.
 - c. Write the RA number in large, clearly visible characters on the *outside* of the shipping box used to return the equipment.
To avoid confusion and misunderstandings, we will return shipments without an RA number clearly visible on the outside of the box to you at your cost.
 - d. We will:
 - Check the remote control, including whether it is covered under the warranty.
 - Replace any remote we find is defective with a new or refurbished remote, if the defective remote is covered under the warranty. We will ship the

- replacement remote at our expense.
- If a defective remote is not covered under the warranty, we will tell you. We may assess you a flat rate charge for a replacement remote, including shipping and insurance.

REGULATORY FACTORS

This device complies with Part 15 of FCC Rules. Operation is subject to the following two conditions:

1. this device may not cause harmful interference, and
2. this device must accept any interference received, including interference that may cause undesired operation.

Changes or modifications to this device may void your authority to operate this equipment. This equipment has been tested and found to comply with the limits for a Class B digital device, pursuant to Part 15 of the FCC Rules. These limits are designed to provide protection against harmful interference in a residential installation. This equipment generates, uses and can radiate radio frequency energy and, if not installed and used in accordance with the instructions, may cause harmful interference to radio communications. However, there is no guarantee that interference will not occur in a particular installation. If this equipment does cause harmful interference to radio or television reception, which can be determined by turning the equipment off and on, the use is encouraged to try to correct the interference by one or more of the following measures:

- Re-orient or relocate the receiving antenna.
- Increase the separation between the equipment and receiver.
- Connect the equipment into an outlet on a circuit different from that to which the receiver is connected. Consult the dealer or an experienced radio/TV technician for help.

Notes

Reference Tables

Write down your remote address, channel numbers/inputs, TV, VCR, DVD player, and stereo equipment codes as you program them for future reference.

Remote Address

--	--



Channel or Input for Satellite Programming

--



TV Code

			1
--	--	--	---

(Optional)



VCR/DVD Player Code

			1
--	--	--	---

(Optional)



Auxiliary Equipment Code

				1
--	--	--	--	---

(Optional)

If you enter a "1" as the last number of your code, your remote is in Limited Mode (see page 2 for more details).

To read out your remote codes, see page 8 for instructions.

**For all your customer needs,
call the Customer Service Center
at 1-800-333-DISH(3474)**



150773